



UMBRELLA REDO

Designed by Katie Steuernagle

Make a “perfect storm” with your favorite coated fabric and an old umbrella! As long as the frame is in great shape, you can give that worn, torn old umbrella a new life with this easy project. You’ll never let a little rip keep you indoors again!

MATERIALS

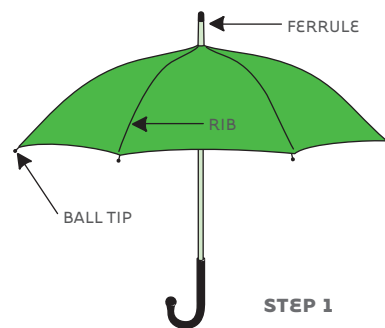
- * 1 yard of 54/55" oilcloth or other laminated fabric
- * 1 spool of coordinating thread
- * Umbrella, 36" in diameter or smaller (make sure the ferrule piece at the top can be unscrewed and removed easily)
- * Posterboard or other large-format paper or interfacing for making a pattern
- * 3" circle template
- * Beeswax (optional)

Finished dimensions – depending on umbrella; no wider than 36" wide when opened

Seam allowance – ¼" unless otherwise specified

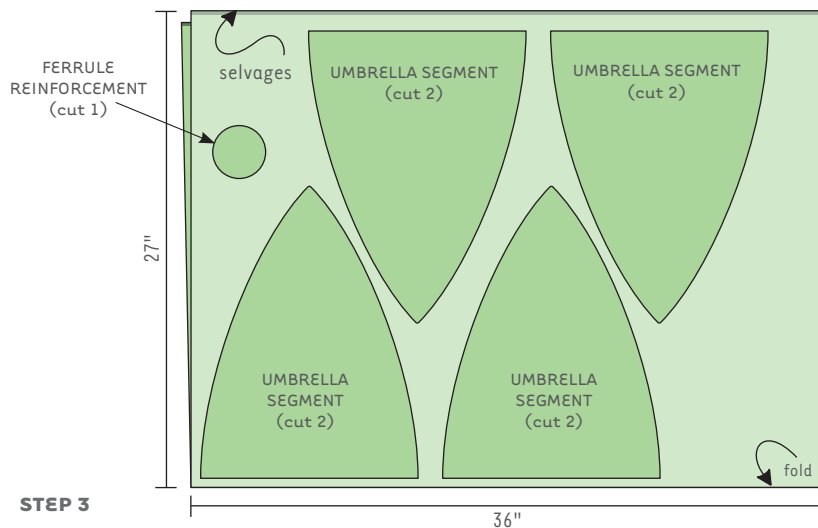
1 Remove the Fabric from the Old Umbrella

Open the umbrella and unscrew the ferrule. Make note of how and where the fabric is attached to the ribs and to the ball tips at the end of each rib. You will be attaching the new fabric to the ribs and ball tips in the same places and in the same fashion. Carefully snip the stitches where the fabric is attached to the ribs and where they run through the ball tips. Take care to keep the ball tips in a safe place, as you will need them to complete the umbrella.



2 Make a Pattern from the Old Fabric

Cut one of the original triangular pieces from the old fabric along the seam. Trace the piece on the pattern paper, and add ¼" around all the sides for the seam allowance. Cut out the pattern.



STEP 3

3 Measure, Mark, and Cut

Fold your fabric in half lengthwise with the right sides together, aligning the selvages. Trace around the pattern four times on the wrong side of the fabric so you can cut eight umbrella segments. Also trace a 3"-diameter circle for the ferrule reinforcement. Cut out the pattern pieces.

4 Stitch the Segments

Position two umbrella segments with the right sides together, aligning all the raw edges. Stitch along one side, stopping $\frac{1}{4}$ " from the end point. Add additional umbrella segments in similar fashion, finally joining the first and last segments together to form a big circle. For extra protection from the elements, rub beeswax on the stitching to coat the thread and prevent rain leaks.

5 Attach the Fabric to the Frame

With right side up, drape the joined segments over the ribs, lining up the seams with the ribs. Hand-stitch the ball tips at the end of each seam, and slip the ball tips over the corresponding ribs. Once all eight ball tips are in place and attached, hand-stitch the new shade in place within the seam allowance to the ribs in the same places where the old fabric was attached.

6 Complete the Umbrella

- * Trim around the ferrule reinforcement piece with pinking shears, if desired.
- * Punch or cut a small hole in the center of this piece, so you can place the piece at the top of the umbrella and allow the ferrule to be screwed back into the umbrella frame through the fabric.
- * Open the umbrella and slip the ferrule reinforcement onto the center top of the umbrella. Reattach the ferrule to hold the pieces in place.